

SKY TEAM ELECTRONICS LIMITED

COMPANY PROFILE

CONTENTS

INTRODUCTION

COMPANY PROFILE

ORGANIZATION

PRODUCT LINES

PRODUCTION CAPABILITY

EQUIPMENT

APPLICATIONS

MARKETING STRATEGY

INTRODUCTION

STE has been providing best solutions to our valuable customers in electronic, automotive, measurement area all over the world in the center of Hong Kong. Aiming the world best co-work partner in the various markets, STE has been growing rapidly. As a trading specialist, STE has provided optimized solutions with various electronic components, sensors, modules and end-products to our customers world-widely.

With our accumulated experiences in marketing and manufacturing various products, we have met various needs of our customers. Our strongest point is that we realized strong price competence through mass-purchase and mass-merchandise.

Furthermore, we are well aware of the latest market trends and new technologies, STE takes a role as a traditional trading company, while providing other services that provide added value, such as integrated procurement service, quality and environmental management, overseas networking in order that we can provide better service and expertise to our customers.

However, we will not stay at our current position, and we will prepare for better future as the global leader in IT industries based on our basic strategies of Customer-intimate, HR-intimate and new technology preoccupation with our experiences and partners..

We sincerely appreciate your kind interest in our products and technology; in addition, we look forward to serving you in the future.

COMPANY PROFILE

Company Name : Sky Team Electronics Limited

(www.skyteamhk.com - Currently under construction)

Established : January 2002 (Originated from Solid Power Electronics)

Major Founder : Chang-Min, Lee

Business field : Electronic Components

**(Thermistor, Humidity sensor, Thermal Cutoffs,
PCB Gaskets, etc)**

Location : HEADQUATER (Hong Kong)

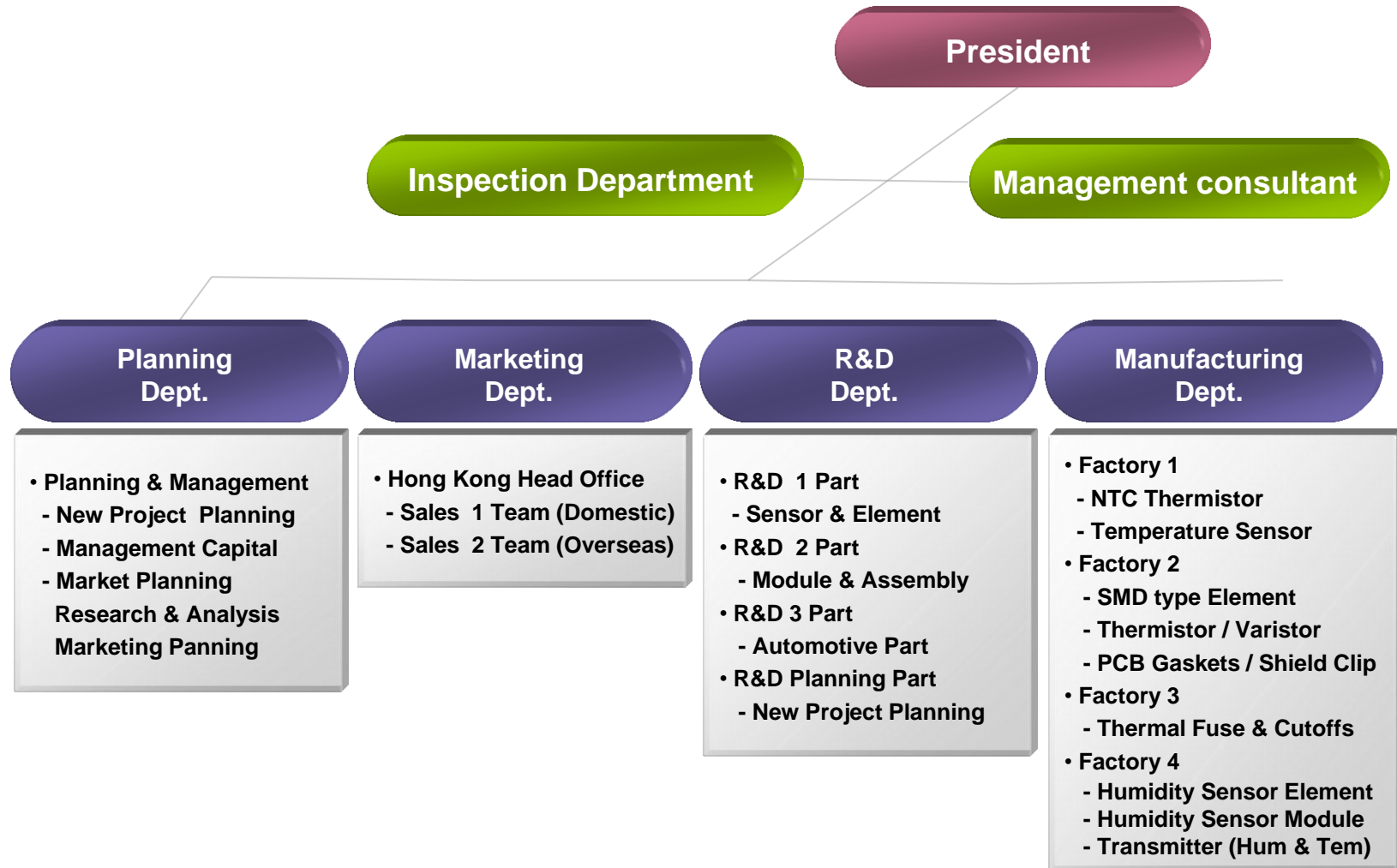
ROOM 2006, 20/FL., RIGHTFUL CENTRE, NO. 12

TAK HING STREET, JORDAN, KOWLOON, HONG KONG

Tel : (+852) 2781-2231

Fax : (+852) 2782-1110

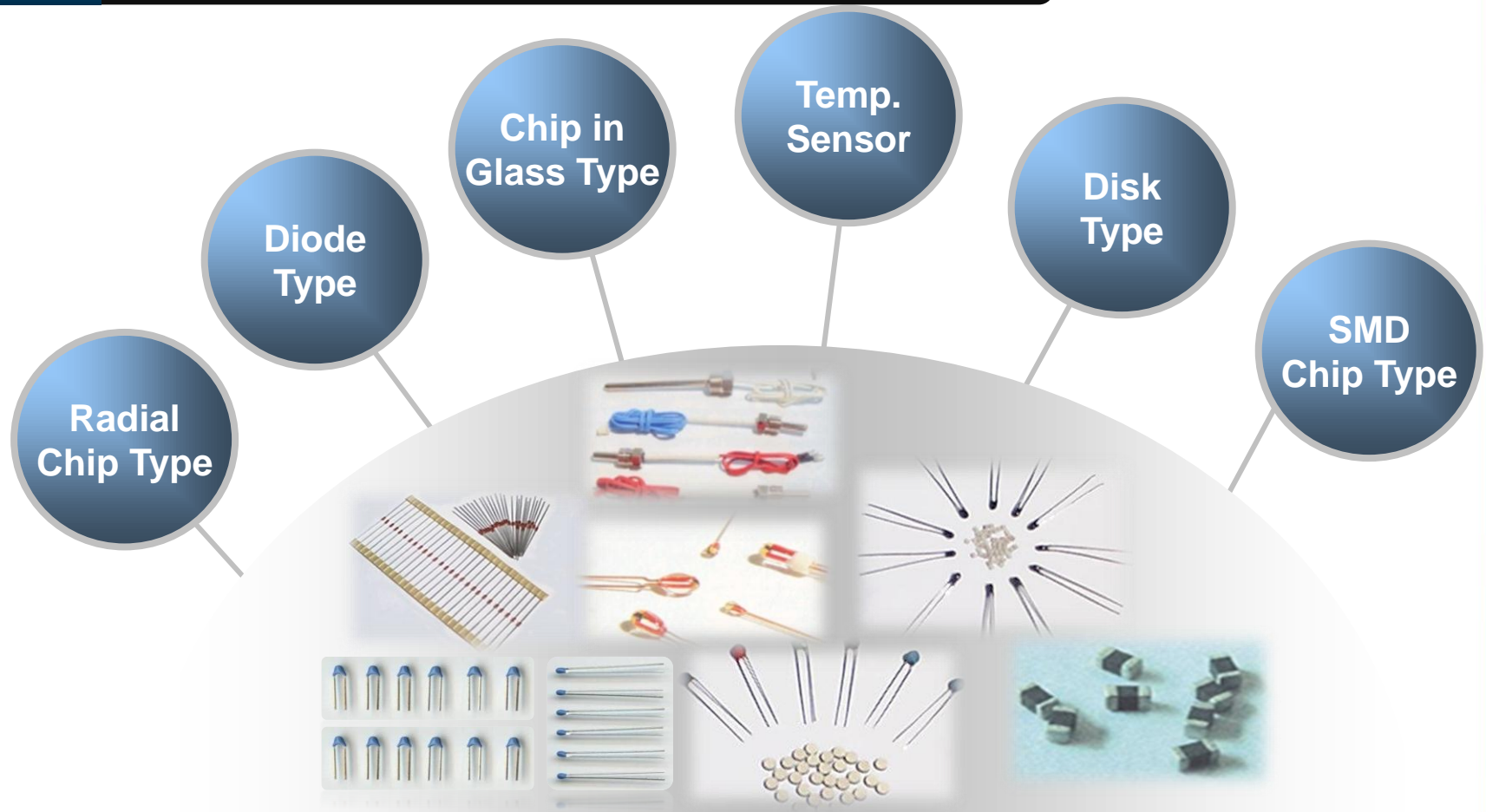
ORGANIZATION OF STE



PRODUCT LINE

NTC THERMISTOR & TEMPERATURE SENSOR

For Home appliance & Automotive



PRODUCT LINE

THERMAL CUTOFFS

For Home appliance & Automotive

Thermal
Cutoffs

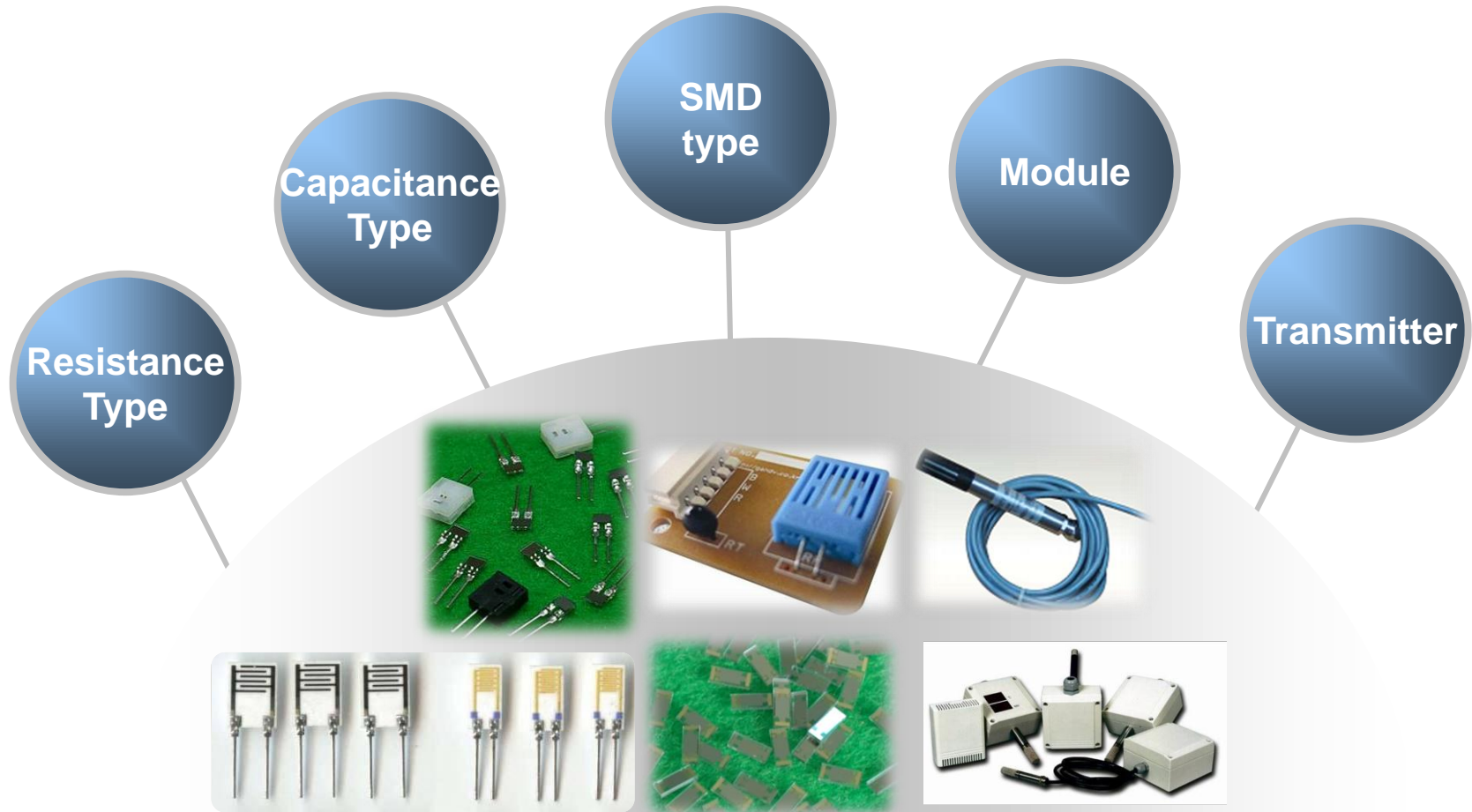
TCO
Assembly



PRODUCT LINE

HUMIDITY SENSOR & MODULE

For Home appliance & Automotive



PRODUCT LINE

PCB Gasket & Shield Clip

For Mobile Devices & LCD Products

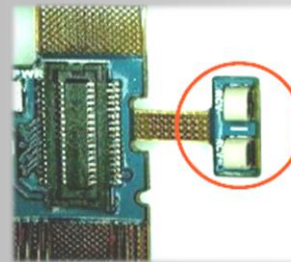
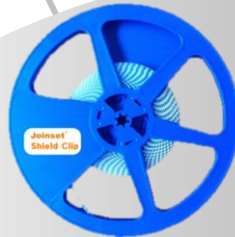
Various
Size

Excellent
ESD
Protection

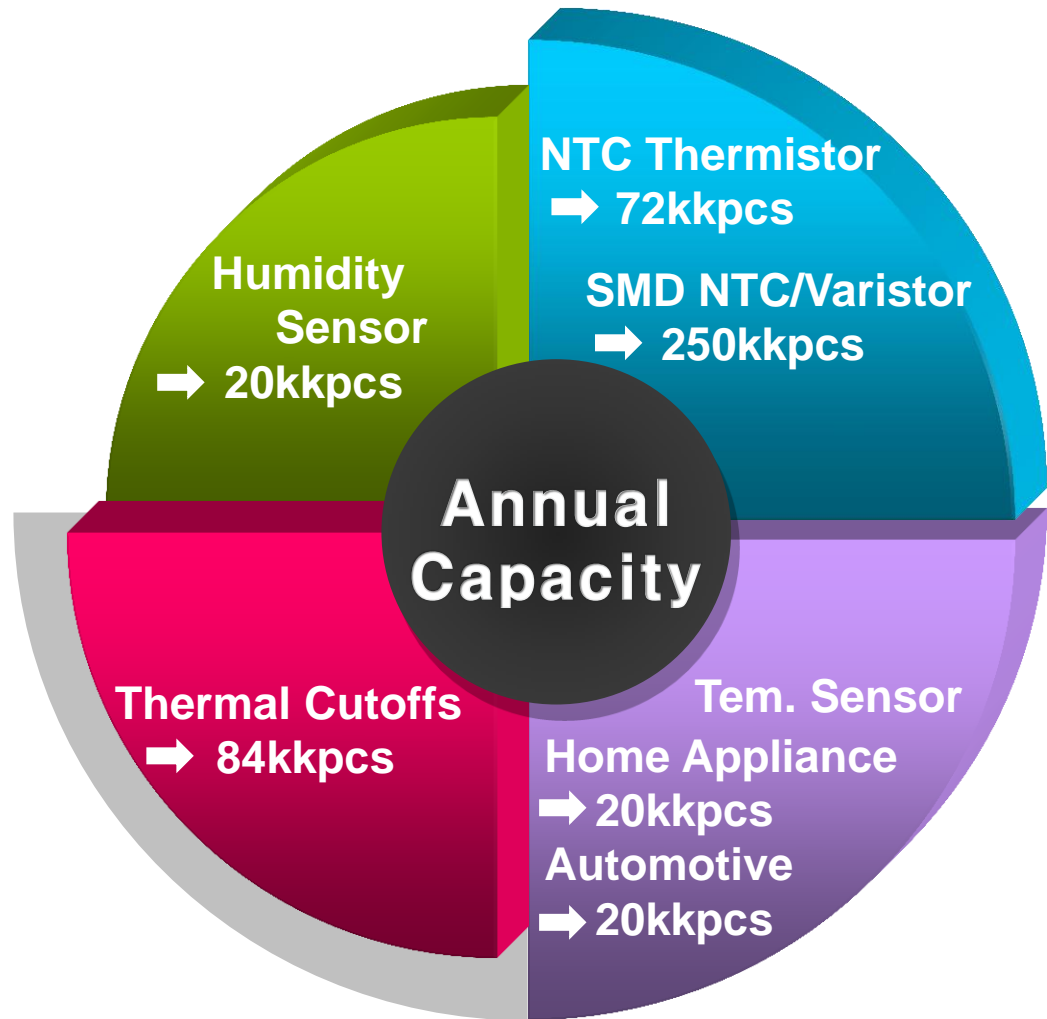
High
Compatibility

Suitable
For Mass
Production

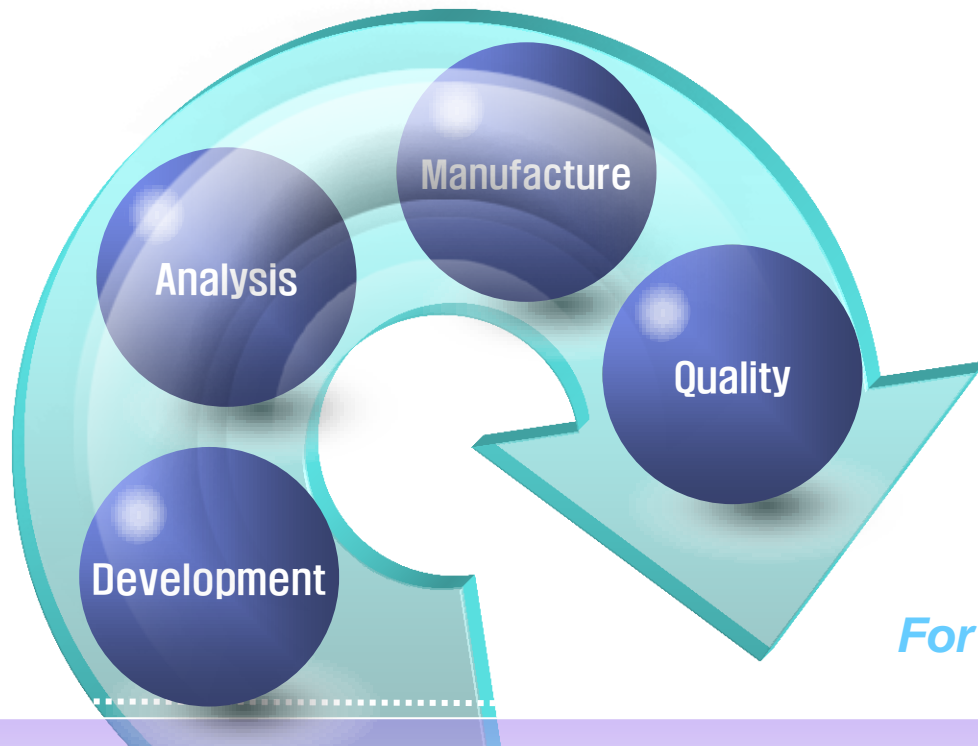
Easy
Re-work
Process



PRODUCTION CAPACITY



EQUIPMENT



For Reliability Test

**X-Ray Real Time
Inspection M/C**

**Thermal
Analyzer**

**Thermal Shock
Chamber**

**Temp. & Hum.
Test Chamber**

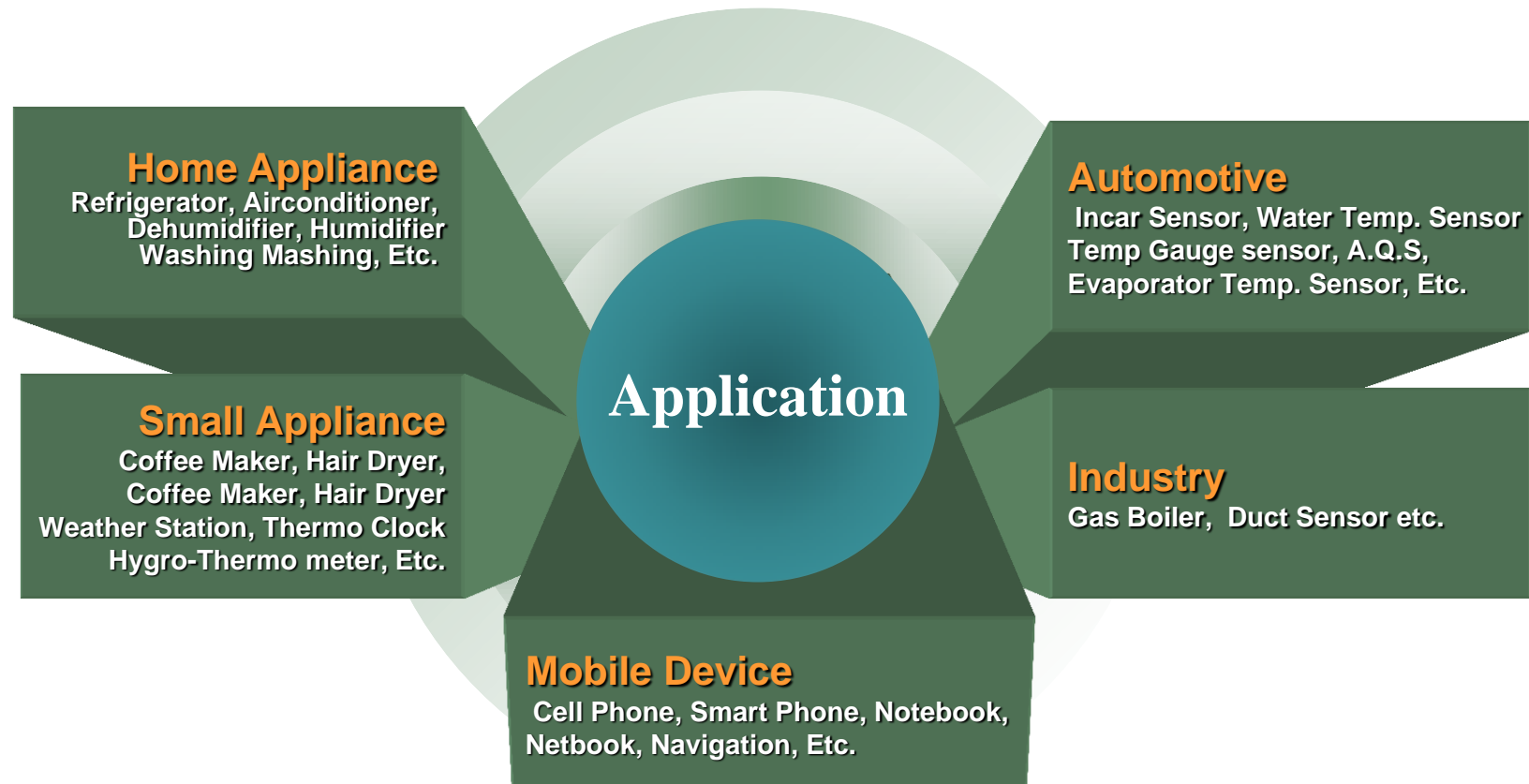
**Aging Test
Chamber**

**High Temp
Aging Chamber**

**Electric
Load Tester**

**Tensient
Overload**

APPLICATION



MARKETING STRATEGY



Sky Team Electronics



Sky Team Electronics (Hong Kong)

Address : ROOM 2006, 20/FL., RIGHTFUL CENTRE, NO. 12
TAK HING STREET, JORDAN, KOWLOON,
HONG KONG

TEL : (+852) 2781-2231

FAX : (+852) 2782-1110

E-mail : info@skyteamhk.com



WWW.SKYTEAMHK.COM